

## ***Devices for samples and swatch making***

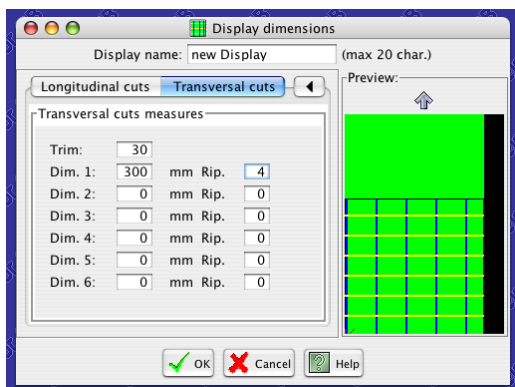
# **Software to print labels and tapes**

## **NstLabelEditor**

The label printing to get a comfortable item identification is a market-field need from ever.

To solve this need in 2005 the **NstLabelEditor** software was edited. The direct cooperation with major field operators permits the rapid develop of the software.

**NstLabelEditor** is today a product to draw and print labels full of functions but simple to use; it the Italian software; it is the Italian software to print labels more used by Italian samples makers.



The operators inputs cutting measures aided by a comfortable preview that show the cutting position as well as entered.

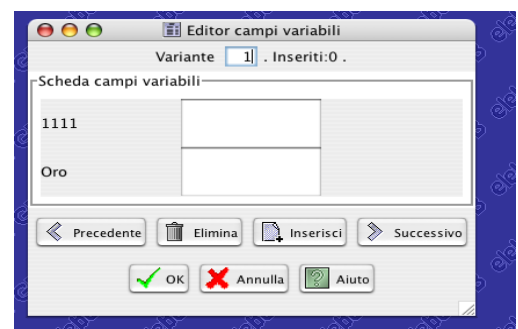
**NstLabelEditor** calculates the number of labels to be printed according to the number of pieces that will get after pinking operation

**NstLabelEditor** in the same way calculates the number of tapes to be printed and the printing safe areas, avoiding wasting of time, tapes and cutting on

printed area.

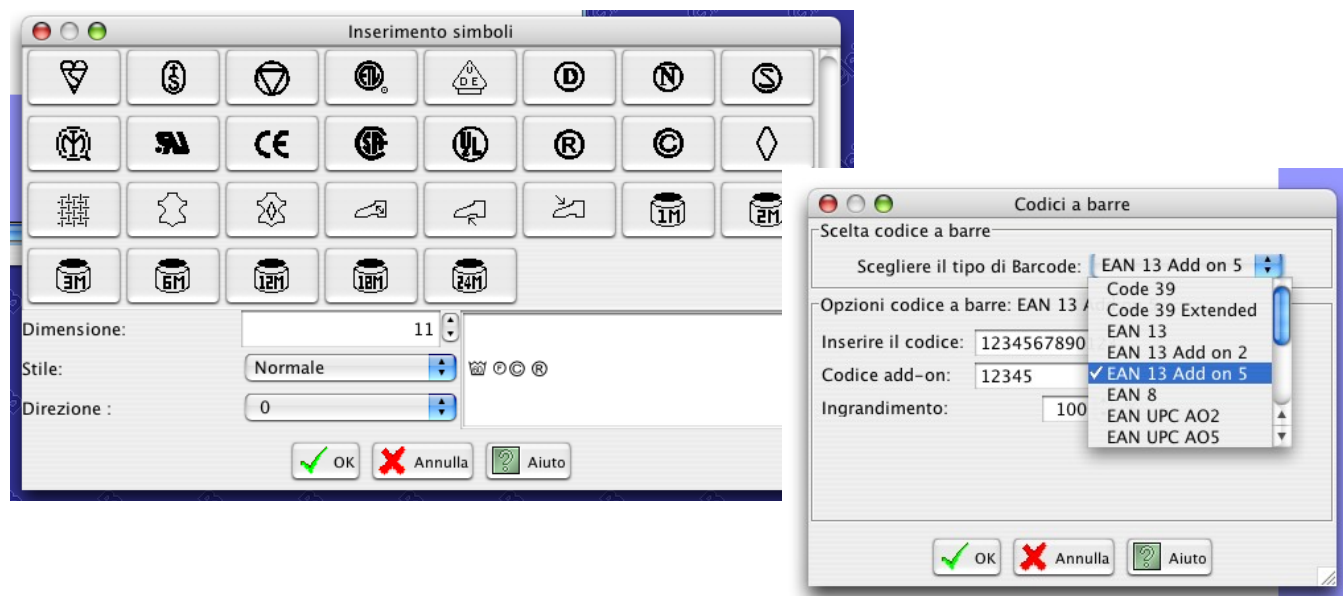
**NstLabelEditor** is supplied with a simple internal database that permit the direct input of variable fields data, also symbolic fields.

Other advanced **NstLabelEditor** functions are: pictures and logo input, negative printing, the possibility to hide fields at printing time, import data list from other labels, self-updating via WEB.



It is also possible to download a demo version of **Light** edition from our internet site: [www.elebor.it](http://www.elebor.it)

# NstLabelEditor



Features	Editions		
	Light	Advanced	Enterprise
Media managed	Labels and tapes		
Supported printers	TEC, Zebra, MHP, Leptons		
Variable fields	Manage by integrated editor, also symbols fields		
Preview	Label and display		
Editing	Wysiwyg (you get what you see on display)		
Usable fonts	All fonts installed on the host computer		
Halftone function for colour pictures and images	✗	✓	✓
Symbols	Yes, font true type		
Supported interfaces	Serial, parallel, ether-net		
Export / Import graphic formats	XML, GIF, PNG, JPG, BMP supported		
Data import formats	XML, NST	XML, NST, MS Excel™	
Supported operating systems	Windows™ , MacOSX™, Linux™		
Supported Barcodes	✗	EAN 13, EAN 8, EAN Add On UPC-A, UPC-E, UPC Add On, JAN,ISBN 3 of 9, 3 of 9 extended	
File printed labels import	✗	✗	✓
Label statistics & report printing	✗	✓	✓
Scripting language	✗	✓ Javascript ™	
External SQL DB connection	✗	✗	✓
Off line printing	✗	✗	✓

The characteristics are subject to change without any notice.

Product designed manufactured and maintained by Eebor GB s.r.l. - Milano - Italy - [www.elebor.it](http://www.elebor.it)